

## 144 MHz - Sectie A

Callsign	Punten naar	Locator	QSOs	Punten	Best DX	Locator	km	Competitiepunten
PA4VHF		JO32JE	157	65517	OM3TZZ	JN88NG	854	285
PA1TK		JO22IJ	139	52277	OE5NNN/P	JN77DX	840	227
PE1ITR		JO21QK	70	27235	OE1W	JN77TX	831	118
PA0GSM		JO22XE	64	19116	SN7L	JO70SS	681	83
PA0WMX		JO21XI	38	14786	OE5NNN/P	JN77DX	707	64

## 144 MHz - Sectie B

Callsign	Punten naar	Locator	QSOs	Punten	Best DX	Locator	km	Competitiepunten
PA1T	-> PI4GN	JO33JF	626	230231	EI9E/P	IO62OM	914	1000
PH4X		JO22QE	68	23388	OE5NNN/P	JN77DX	789	102

## 144 MHz - Sectie C

Callsign	Punten naar	Locator	QSOs	Punten	Best DX	Locator	km	Competitiepunten
PE1EWR		JO11SL	74	23101	EI9E/P	IO62OM	717	100
PA3CGJ		JO32AA	66	20253	SN7L	JO70SS	675	88
PA0FEI		JO33BC	66	19388	SN7L	JO70SS	696	84
PA0MIR		JO22LL	43	14226	SN7L	JO70SS	755	62
PG5V		JO21EW	13	3318	DA0FF	JO40XL	422	14
PA5P		JO32BF	7	2602	OZ1ALS	JO44XX	397	11

## 144 MHz - Sectie N

Callsign	Punten naar	Locator	QSOs	Punten	Best DX	Locator	km	Competitiepunten
PD4R		JO32CD	48	14967	SN7L	JO70SS	664	65
PD0ME		JO32KX	24	7480	OL4A	JO60RN	527	32
PD1ODE		JO22CB	28	6890	DR1H	JN59OP	560	30
PD1B		JO32GQ	11	3157	OK1KNG	JN69RI	610	14
PD3OES		JO32KR	11	3050	OL7C	JO60JJ	485	13

## 432 MHz - Sectie A

Callsign	Punten naar	Locator	QSOs	Punten	Best DX	Locator	km	Competitiepunten
PA4VHF		JO32JE	55	22056	OM3KII	JN88UU	856	279
PE1ITR		JO21QK	38	13359	SN7L	JO70SS	714	169
PA0WMX		JO21XI	20	6751	OL3Z	JN79FX	618	85

## 432 MHz - Sectie B

Callsign	Punten naar	Locator	QSOs	Punten	Best DX	Locator	km	Competitiepunten
PI4GN		JO33II	217	79147	EI9E/P	IO62OM	909	1000
PA5KM	-> PI4Z	JO11WM	62	24778	OK2C	JN99AJ	1030	313

## 432 MHz - Sectie C

Callsign	Punten naar	Locator	QSOs	Punten	Best DX	Locator	km	Competitiepunten
PE1EWR		JO11SL	40	12314	EI9E/P	IO62OM	717	156
PG5V		JO21EW	34	9077	GM4JTJ	IO86RP	689	115
PH4X		JO22QE	25	8685	SN7L	JO70SS	721	110
PA0FEI		JO33BC	16	4117	OK2A	JO60JJ	549	52
PA0MIR		JO22LL	12	3152	OZ1ALS	JO44XX	431	40

## 432 MHz - Sectie N

Callsign	Punten naar	Locator	QSOs	Punten	Best DX	Locator	km	Competitiepunten
PD4R		JO32CD	28	9822	SN7L	JO70SS	664	124
PE9RX		JO22HB	8	2142	OZ1ALS	JO44XX	479	27
PD1ODE		JO22CB	3	690	DL0GM	JO31UB	267	9

## 1.3 GHz - Sectie B

Callsign	Punten naar	Locator	QSOs	Punten	Best DX	Locator	km	Competitiepunten
PI4GN		JO33II	96	33834	OM3KII	JN88UU	916	1000
PI4Z		JO11WM	30	7996	OK2A	JO60JJ	637	236
PE1MMP		JO21VT	25	5391	G2BQY/P	IO81RF	580	159

## 1.3 GHz - Sectie D

Callsign	Punten naar	Locator	QSOs	Punten	Best DX	Locator	km	Competitiepunten
----------	-------------	---------	------	--------	---------	---------	----	------------------

PA0S		JO21FW	43	15382	OK1KUO	JO80FF	858	455
PE9RX		JO22HB	36	8875	OK2M	JN69UN	696	262
PA0WMX		JO21XI	22	6929	G3ZME/P	IO82NN	620	205
PE1EWR		JO11SL	23	5263	G2BQY/P	IO81RF	424	156
PA3AWJ		JO21GW	15	4937	DK1KC/P	JN58QH	632	146
PA0JUS		JO33NB	11	2628	G3PYE/P	JO02CE	477	78
PA0O		JO33HG	6	2301	G2BQY/P	IO81RF	664	68
PH4X		JO22QE	10	2280	OL3Z	JN79FX	680	67
PA0FEI		JO33BC	9	1603	G0VHF/P	JO01PU	356	47
PG5V		JO21EW	8	1057	G3PYE/P	JO02CE	287	31

## 2.3 GHz - Sectie B

Callsign	Punten naar	Locator	QSOs	Punten	Best DX	Locator	km	Competitiepunten
PI4GN		JO33II	26	8038	OK1MAC	JN79IO	693	1000
PI4Z		JO11WM	10	2105	DL3IAE	JN49DG	401	262
PE1MMP		JO21VT	12	1891	OZ1ALS	JO44XX	448	235

## 2.3 GHz - Sectie D

Callsign	Punten naar	Locator	QSOs	Punten	Best DX	Locator	km	Competitiepunten
PE1EWR		JO11SL	8	2109	DL3IAE	JN49DG	417	262
PA0JUS		JO33NB	6	1027	PE1EWR	JO11SL	301	128
PE9RX		JO22HB	6	817	PI4GN	JO33II	201	102
PA0FEI		JO33BC	3	336	DL0LN	JO31QX	151	42

## 3.4 GHz - Sectie B

Callsign	Punten naar	Locator	QSOs	Punten	Best DX	Locator	km	Competitiepunten
PI4GN		JO33II	15	4586	OK1YA	JN79IO	693	750
PI4Z		JO11WM	5	1238	PI4GN	JO33II	281	202

## 3.4 GHz - Sectie D

Callsign	Punten naar	Locator	QSOs	Punten	Best DX	Locator	km	Competitiepunten
PA0JUS		JO33NB	4	560	PI4Z	JO11WM	280	92

Datum: 2018-07-30

## 5.7 GHz - Sectie B

Callsign	Punten naar	Locator	QSOs	Punten	Best DX	Locator	km	Competitiepunten
PI4GN		JO33II	12	3467	OK1YA	JN79IO	693	1000
PI4Z		JO11WM	7	1776	DL3IAE	JN49DG	401	512
PE1MMP		JO21VT	6	664	PI4GN	JO33II	183	192

## 5.7 GHz - Sectie D

Callsign	Punten naar	Locator	QSOs	Punten	Best DX	Locator	km	Competitiepunten
PA0JUS		JO33NB	5	729	PI4Z	JO11WM	280	210

## 10 GHz - Sectie B

Callsign	Punten naar	Locator	QSOs	Punten	Best DX	Locator	km	Competitiepunten
PI4GN		JO33II	21	4889	DL3IAE	JN49DG	468	1000
PE1MMP		JO21VT	20	2240	DL3IAS	JN49EJ	325	458
PI4Z		JO11WM	9	1703	PI4GN	JO33II	281	348

## 10 GHz - Sectie D

Callsign	Punten naar	Locator	QSOs	Punten	Best DX	Locator	km	Competitiepunten
PA0S		JO21FW	13	3276	OK2A	JO60JJ	605	670
PA4ZP		JO21RK	12	2482	OL4A	JO60RN	568	508
PA3AWJ		JO21GW	6	1351	OK2A	JO60JJ	600	276
PA0WMX		JO21XI	9	1303	DG5FEB/P	JO40PL	254	267
PA0JUS		JO33NB	8	1244	PI4Z	JO11WM	280	254

## 24 GHz - Sectie B

Callsign	Punten naar	Locator	QSOs	Punten	Best DX	Locator	km	Competitiepunten
PI4GN		JO33II	4	449	PA0BAT	JO31FX	154	1000
PE1MMP		JO21VT	4	386	PA/DL6NAA	JO23OA	141	860

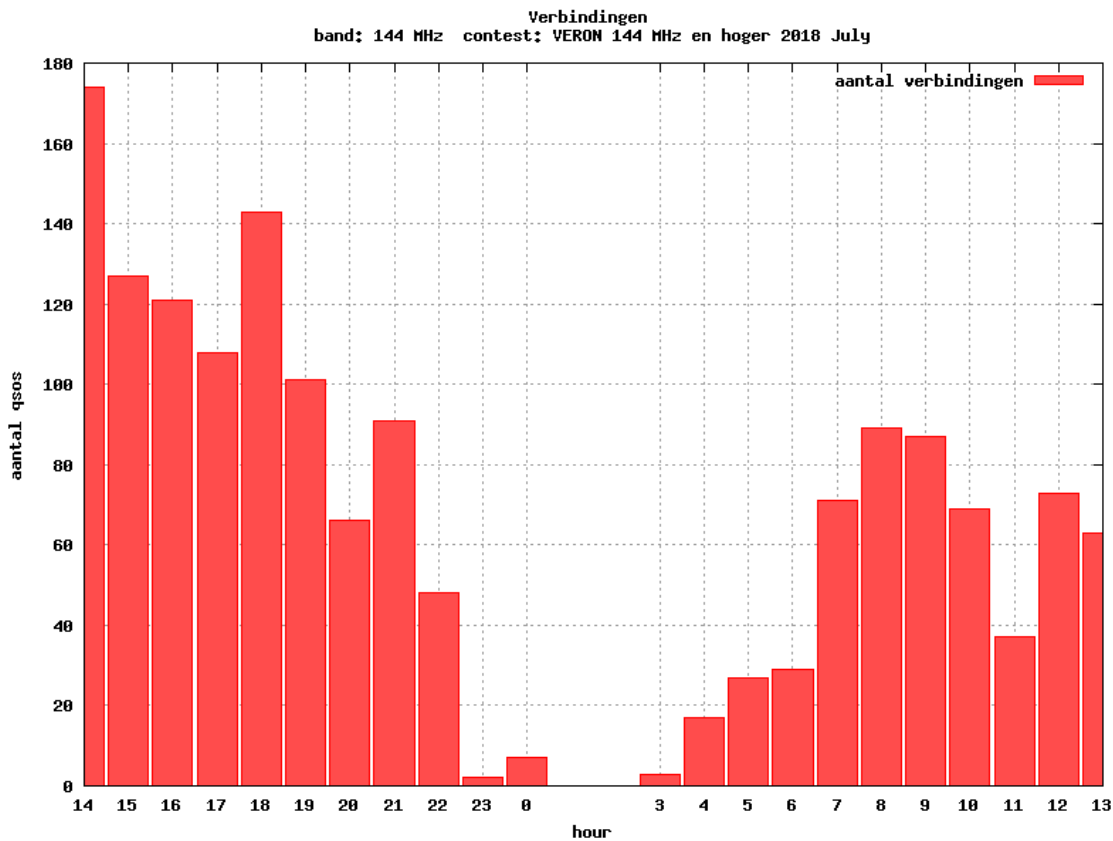
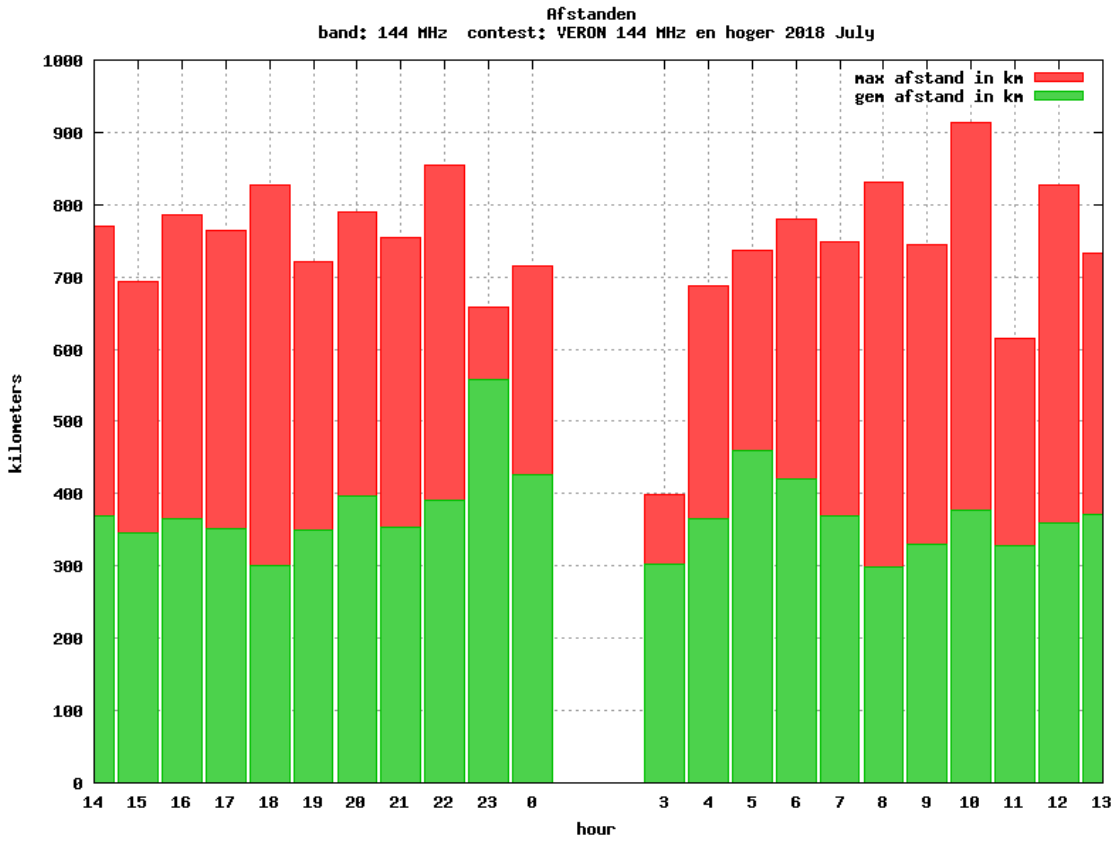
## 24 GHz - Sectie D

Callsign	Punten naar	Locator	QSOs	Punten	Best DX	Locator	km	Competitiepunten
----------	-------------	---------	------	--------	---------	---------	----	------------------

Datum: 2018-07-30

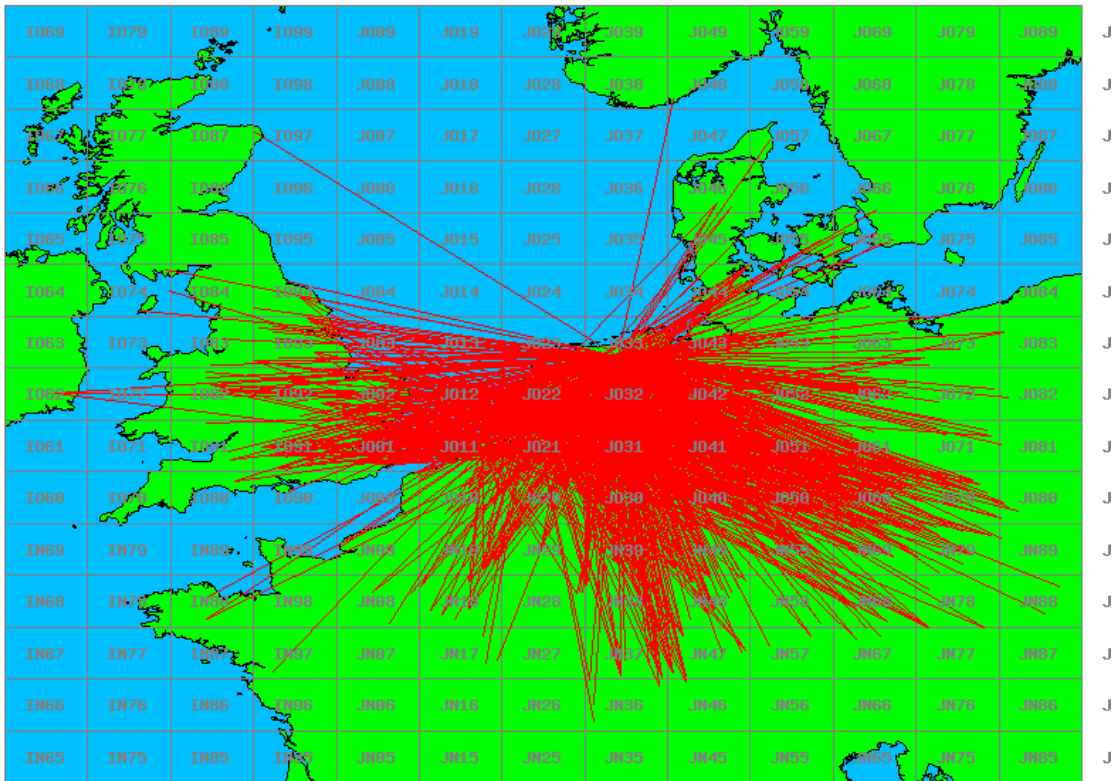
PA3AWJ		JO21GW	1	87	PE1MMP	JO21VT	87	194
PA0JUS		JO33NB	1	43	PI4GN	JO33II	43	96

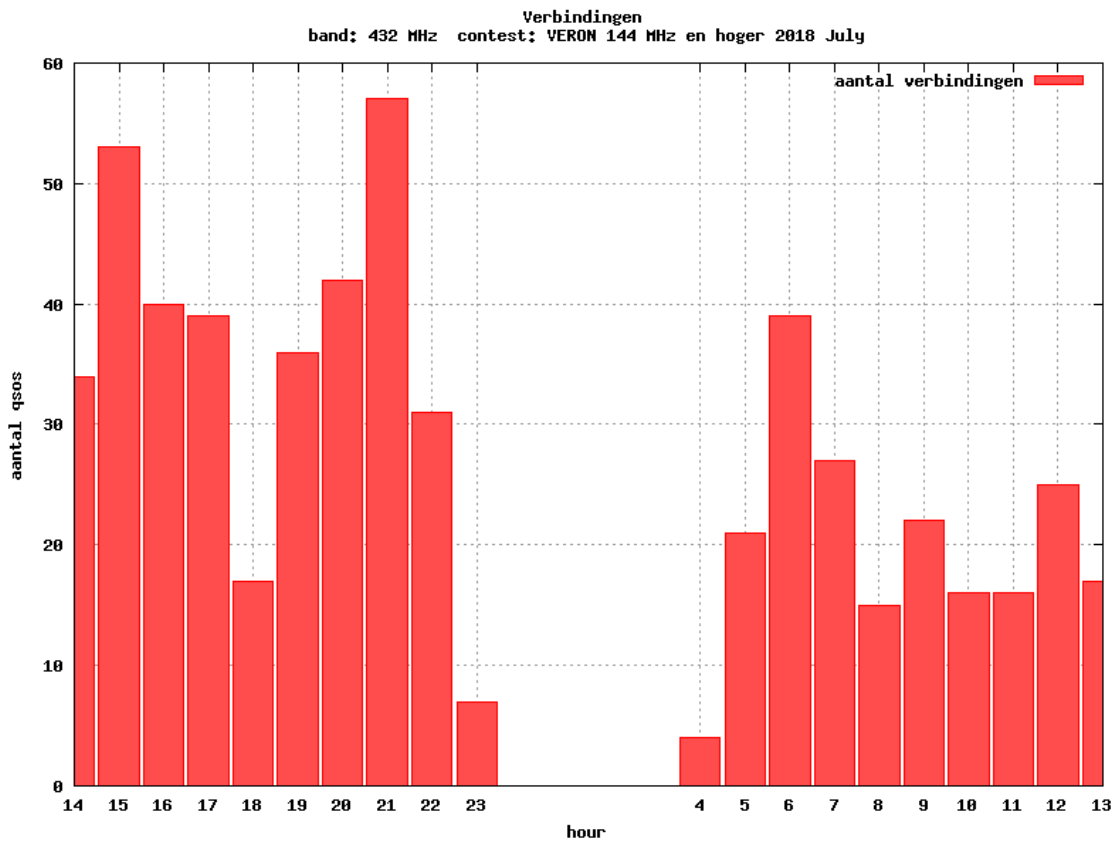
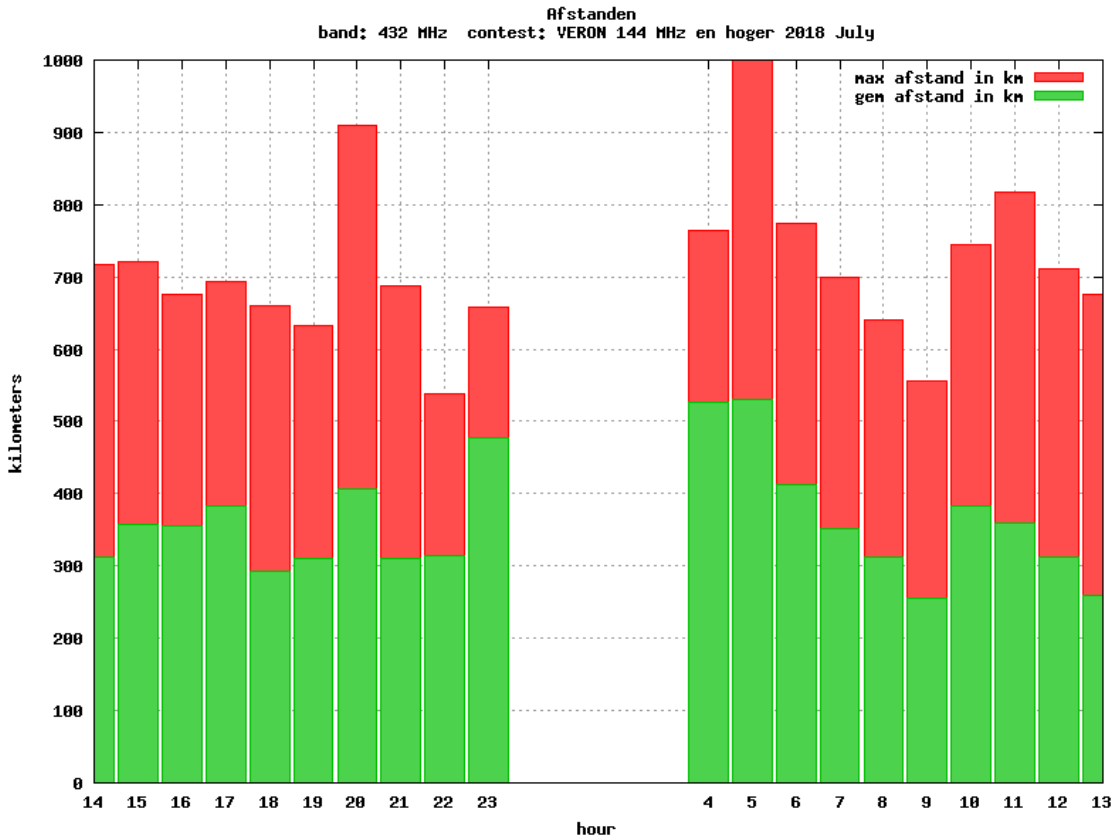
Datum: 2018-07-30



Datum: 2018-07-30

Band: 144 MHz. Alle Verbindingen van de deelnemers op 2018-07-07/08

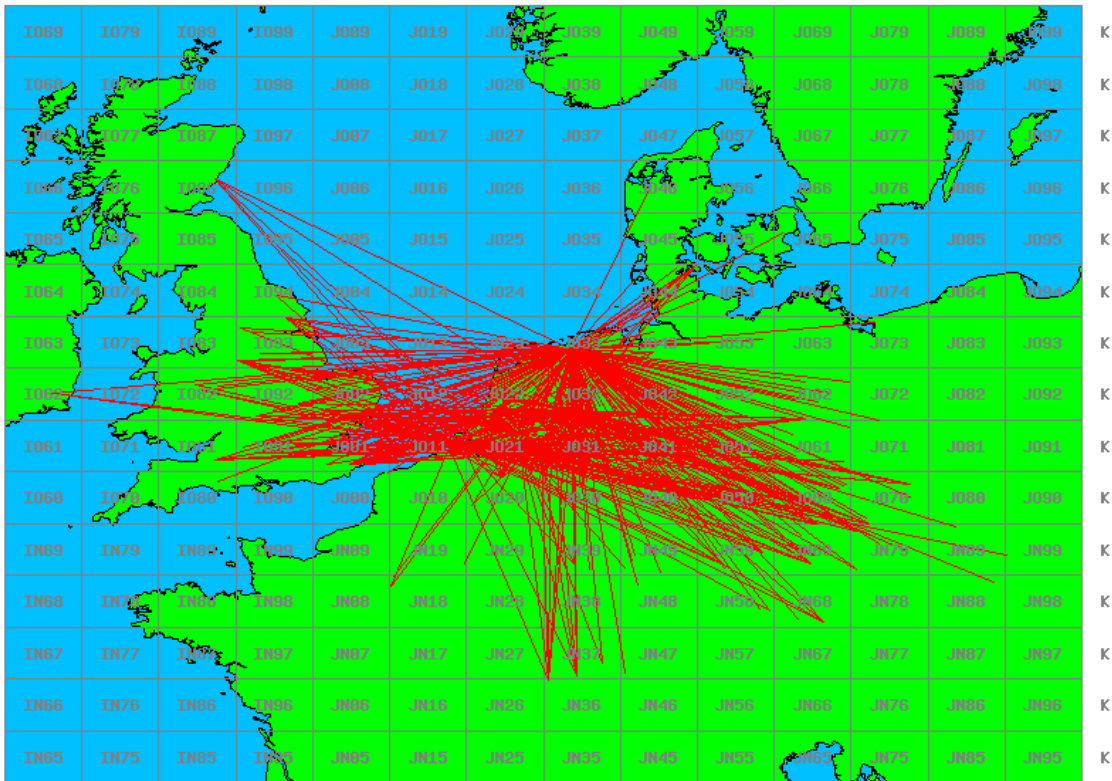


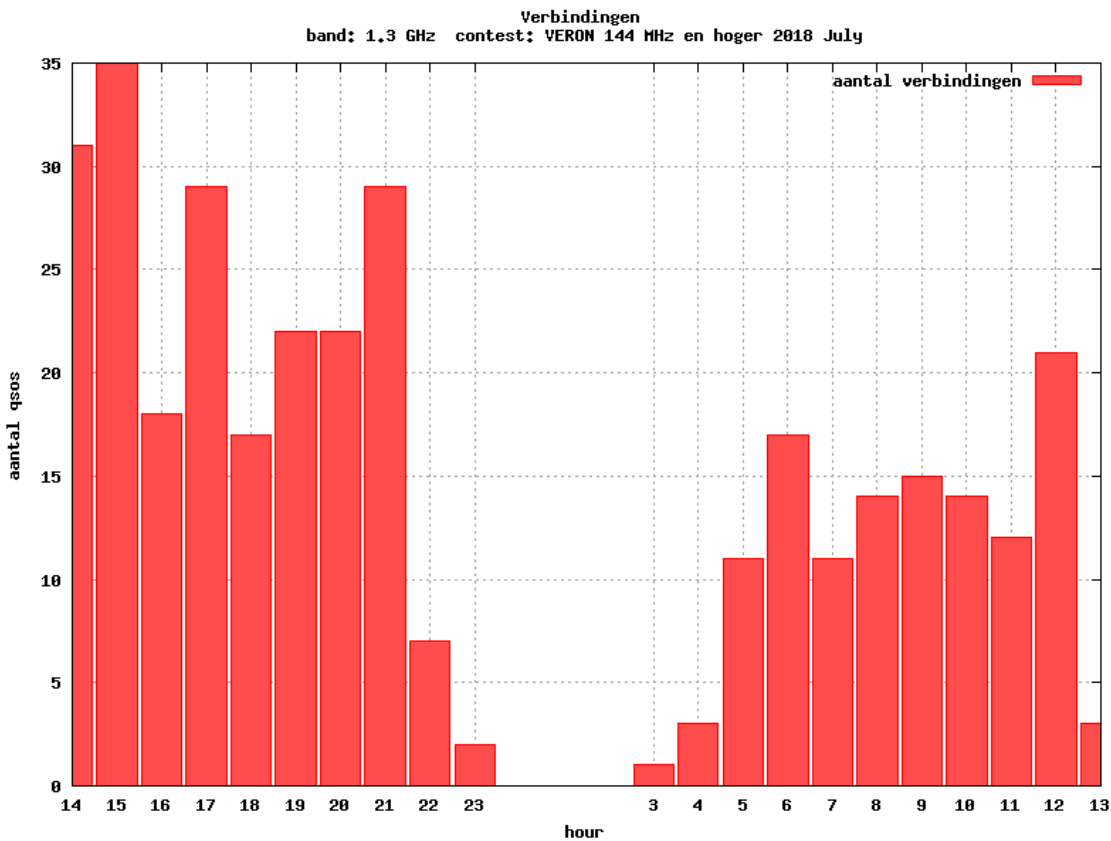
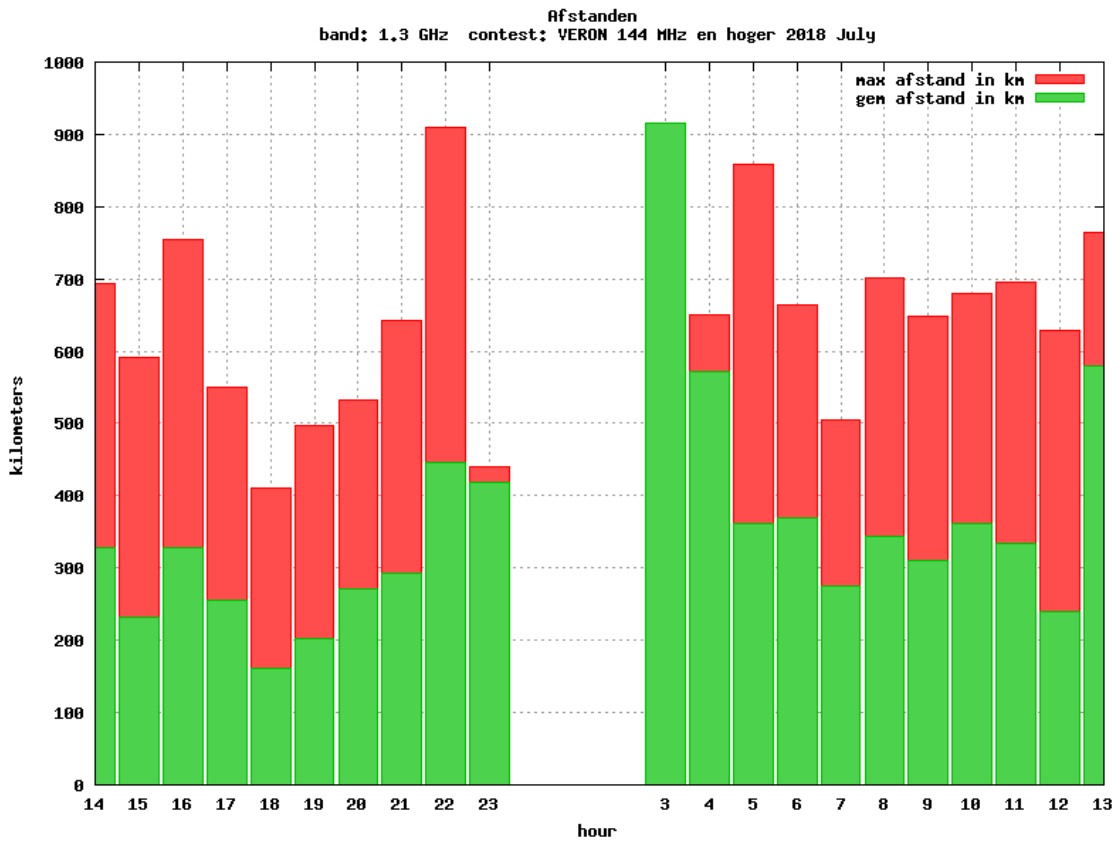




Datum: 2018-07-30

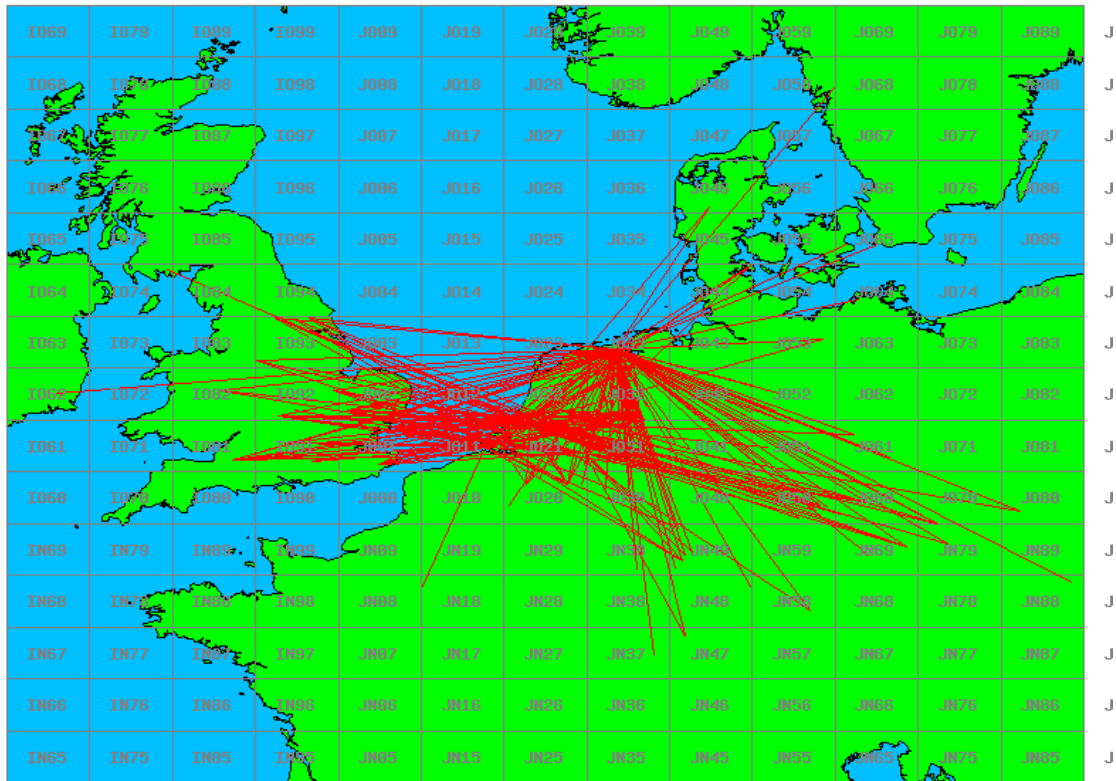
Band: 432 MHz. Alle Verbindingen van de deelnemers op 2018-07-07/08



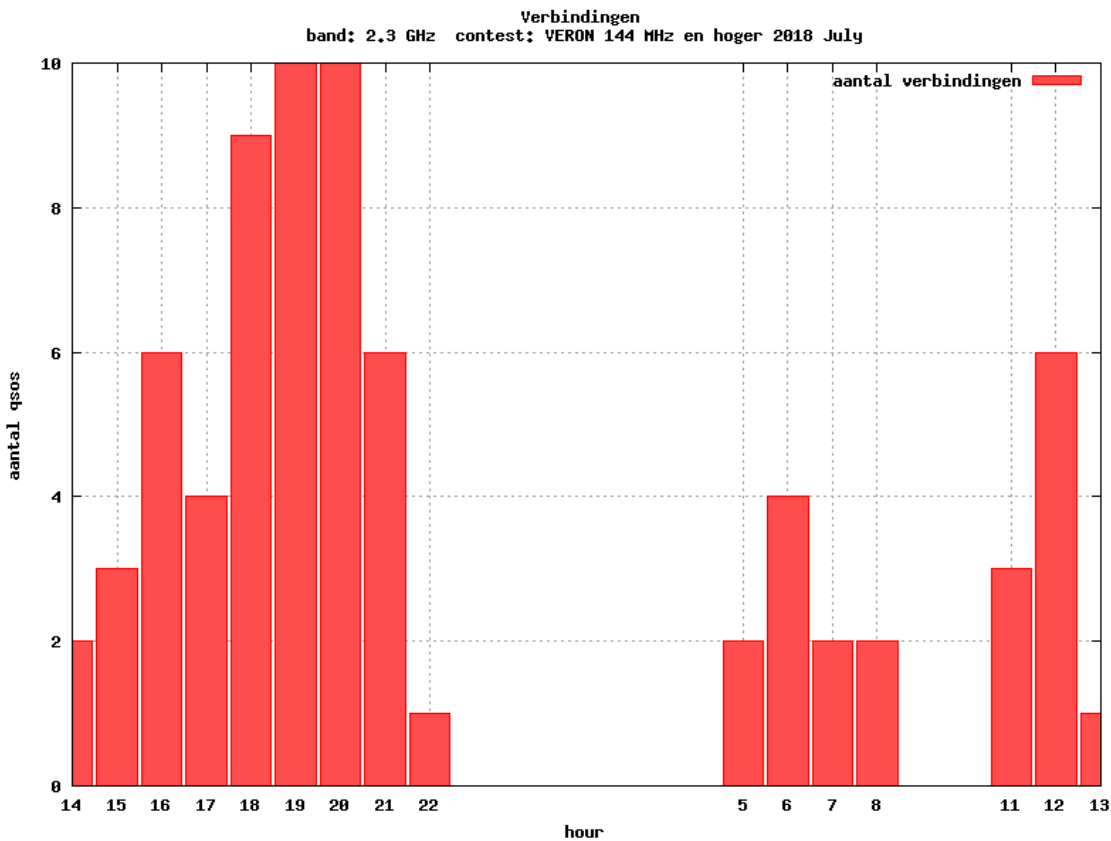
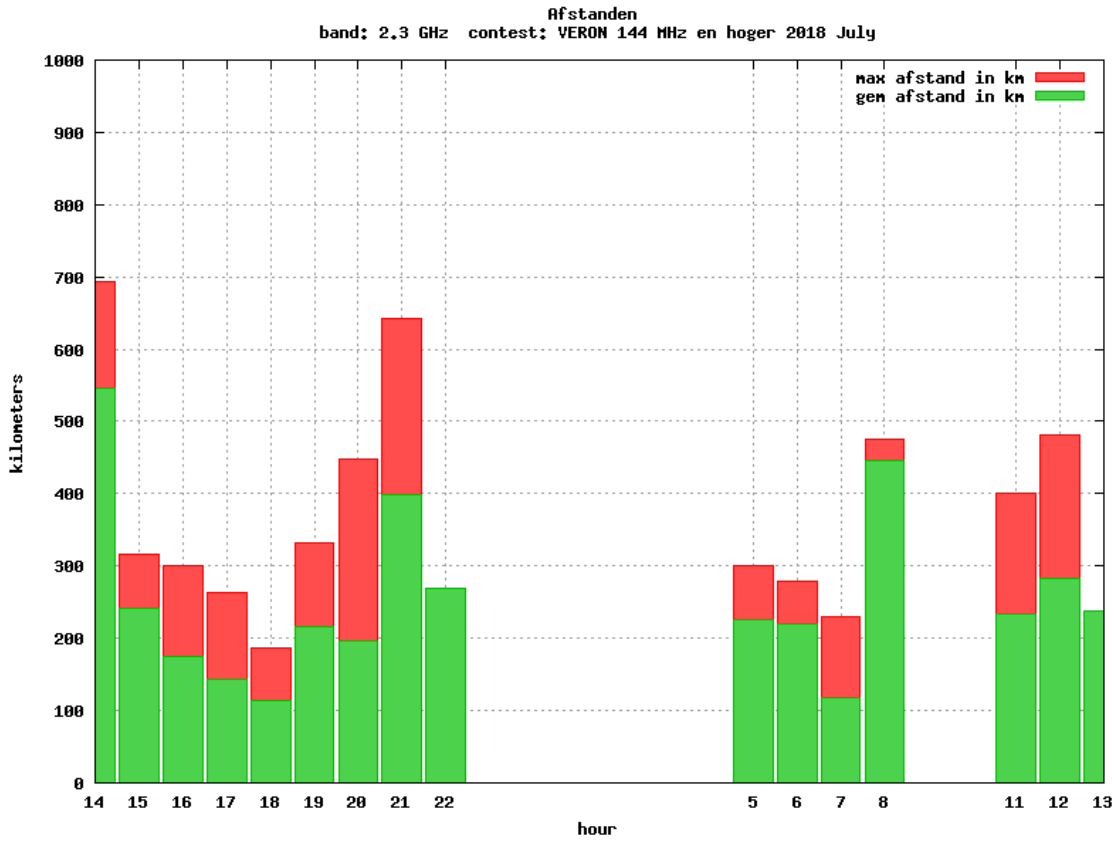


Datum: 2018-07-30

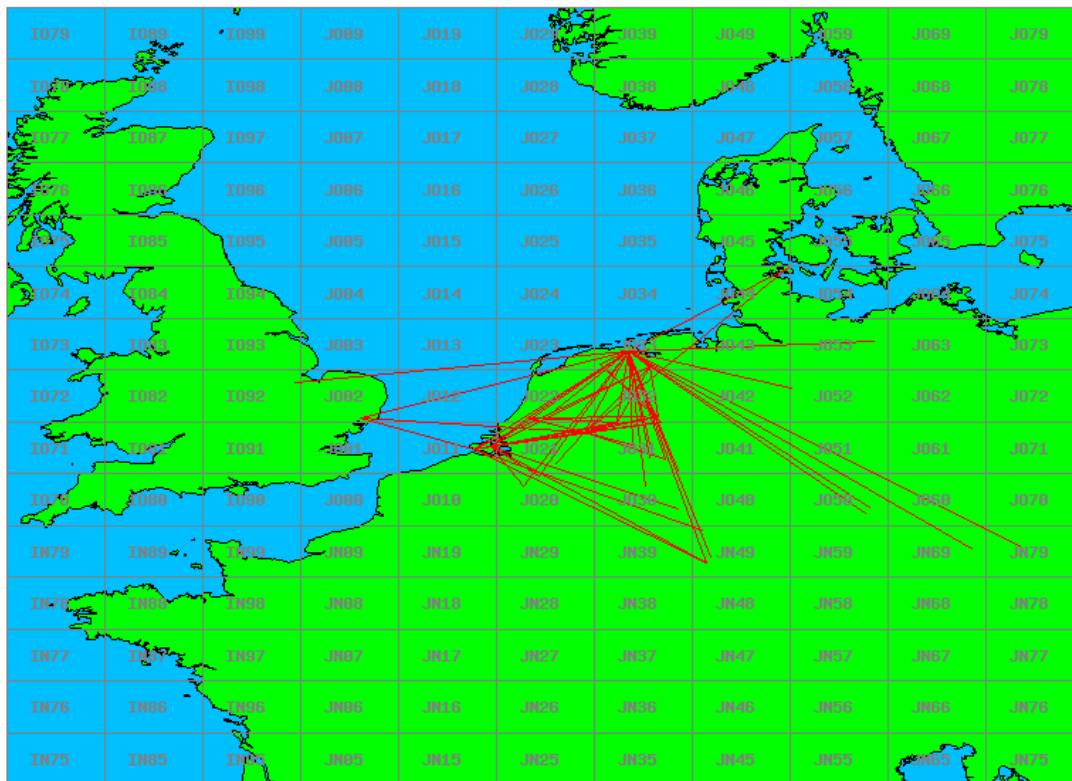
**Band: 1.3 GHz. Alle Verbindingen van de deelnemers op 2018-07-07/08**

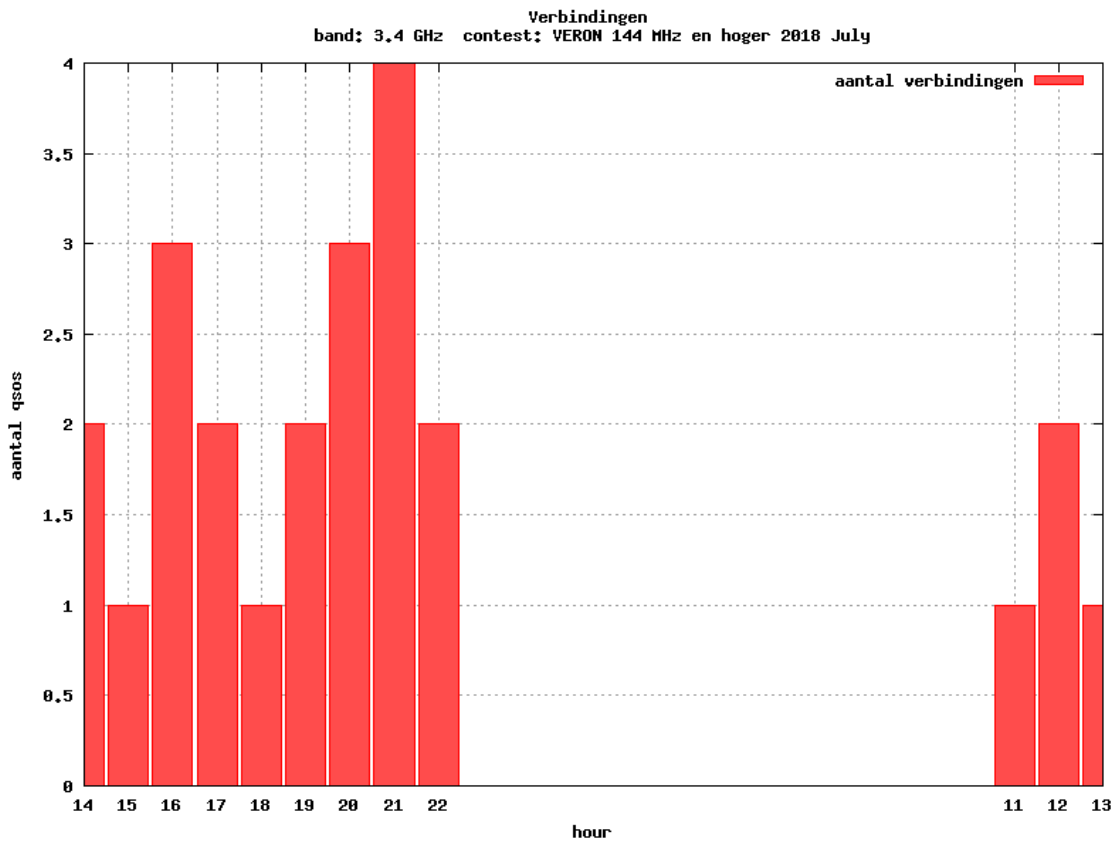
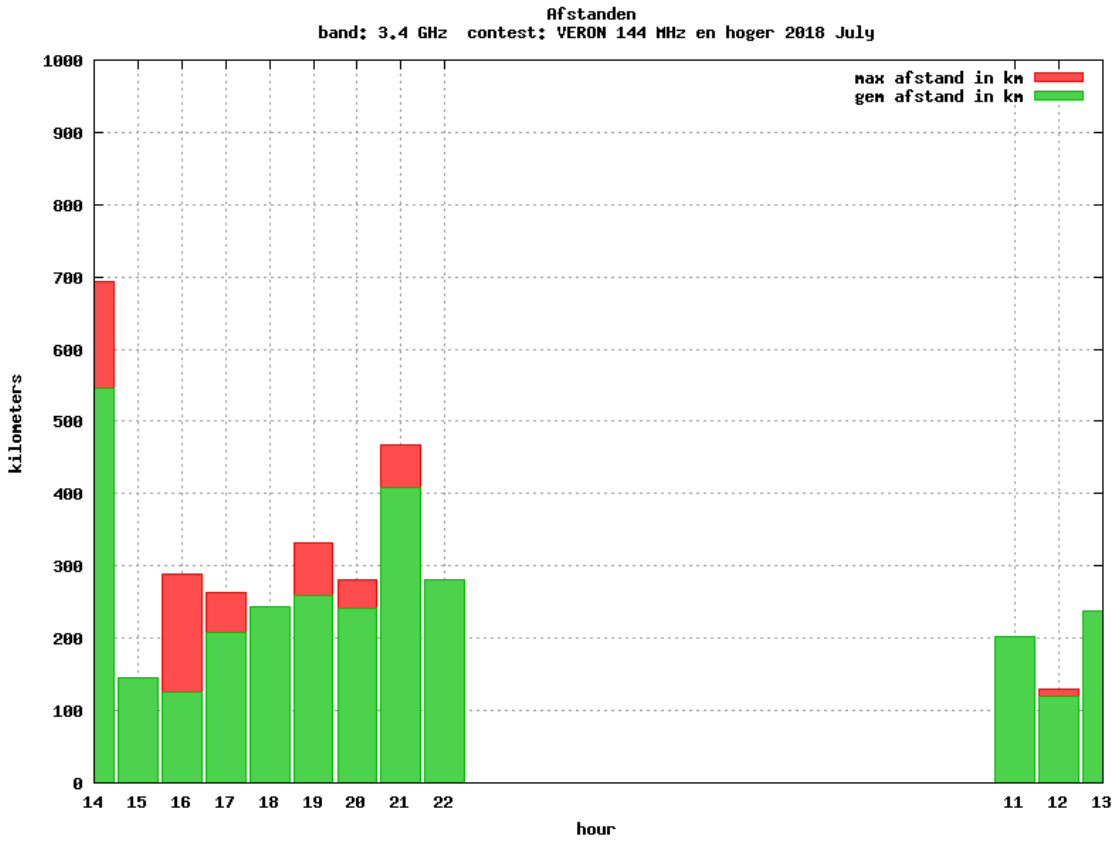


Datum: 2018-07-30



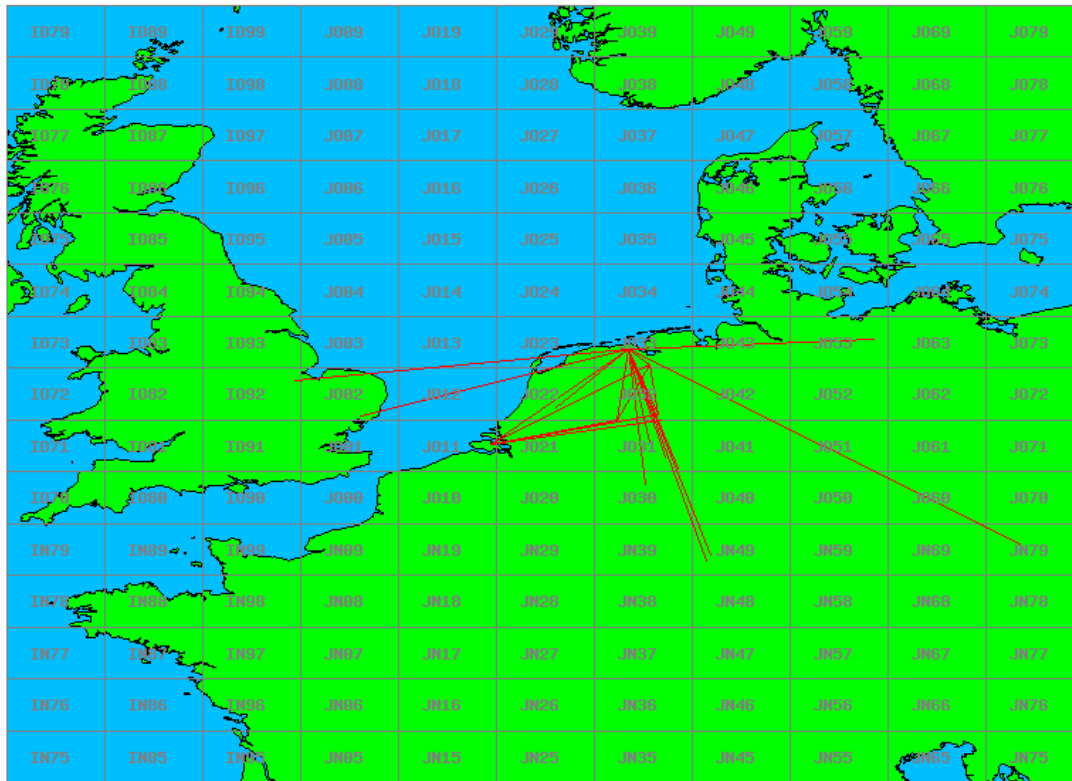
Band: 2.3 GHz. Alle Verbindingen van de deelnemers op 2018-07-07/08



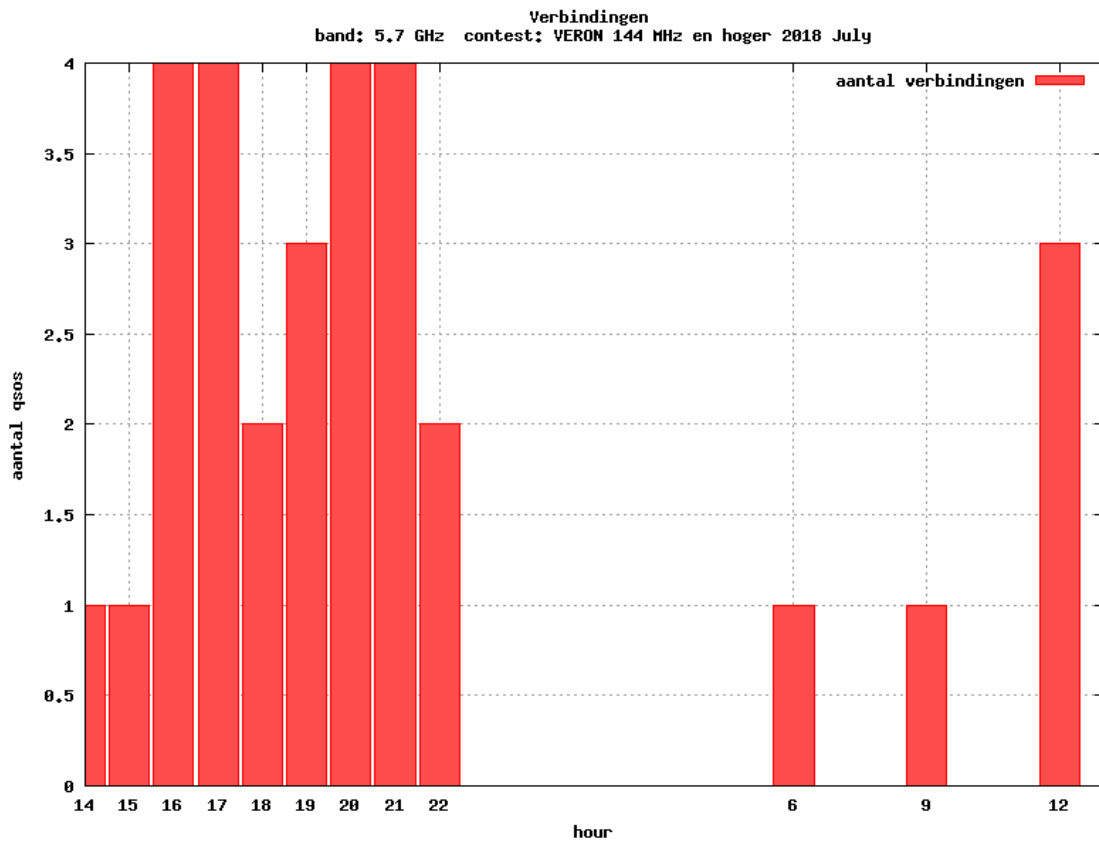
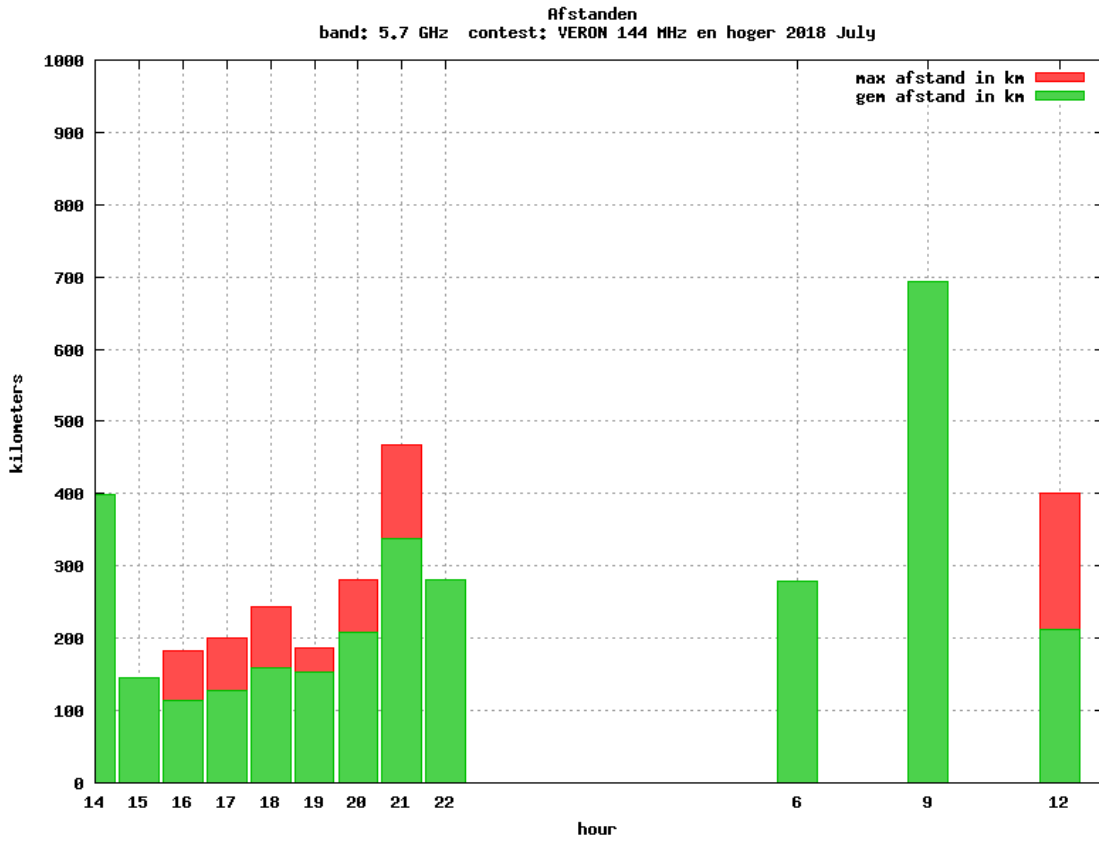


Datum: 2018-07-30

Band: 3,4 GHz. Alle Verbindingen van de deelnemers op 2018-07-07/08



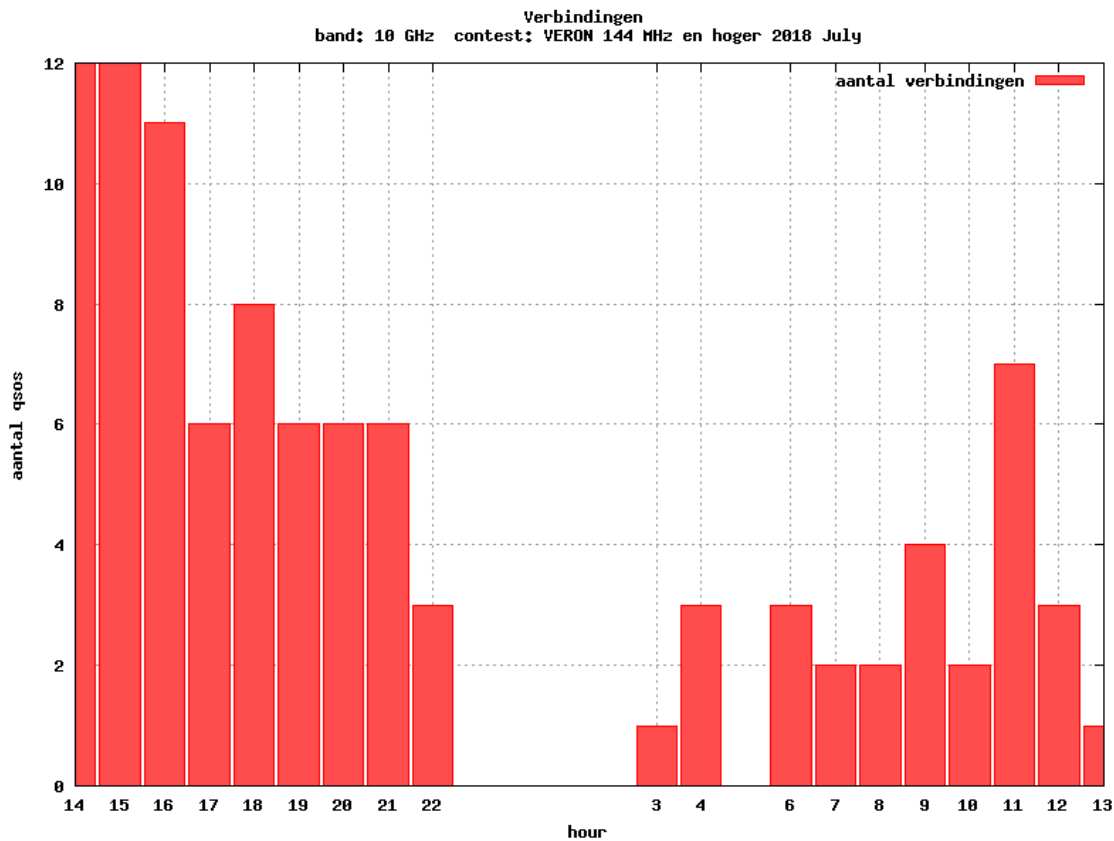
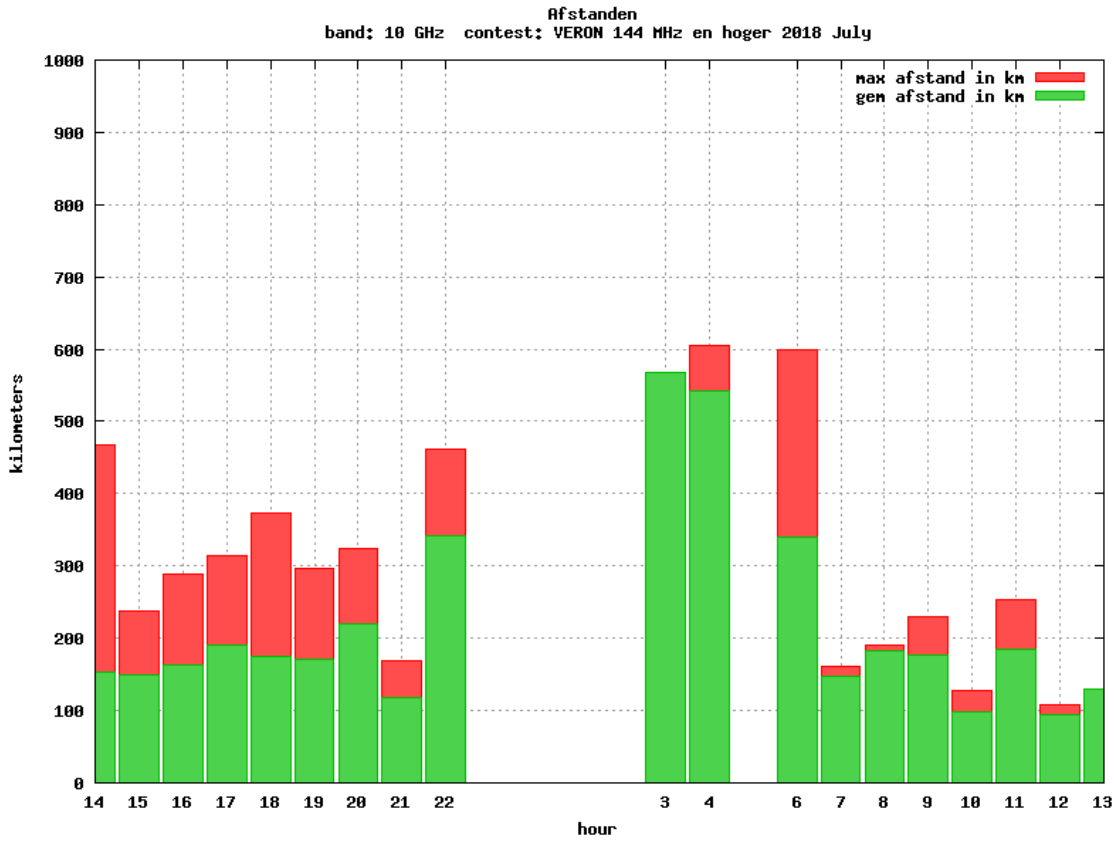
Datum: 2018-07-30





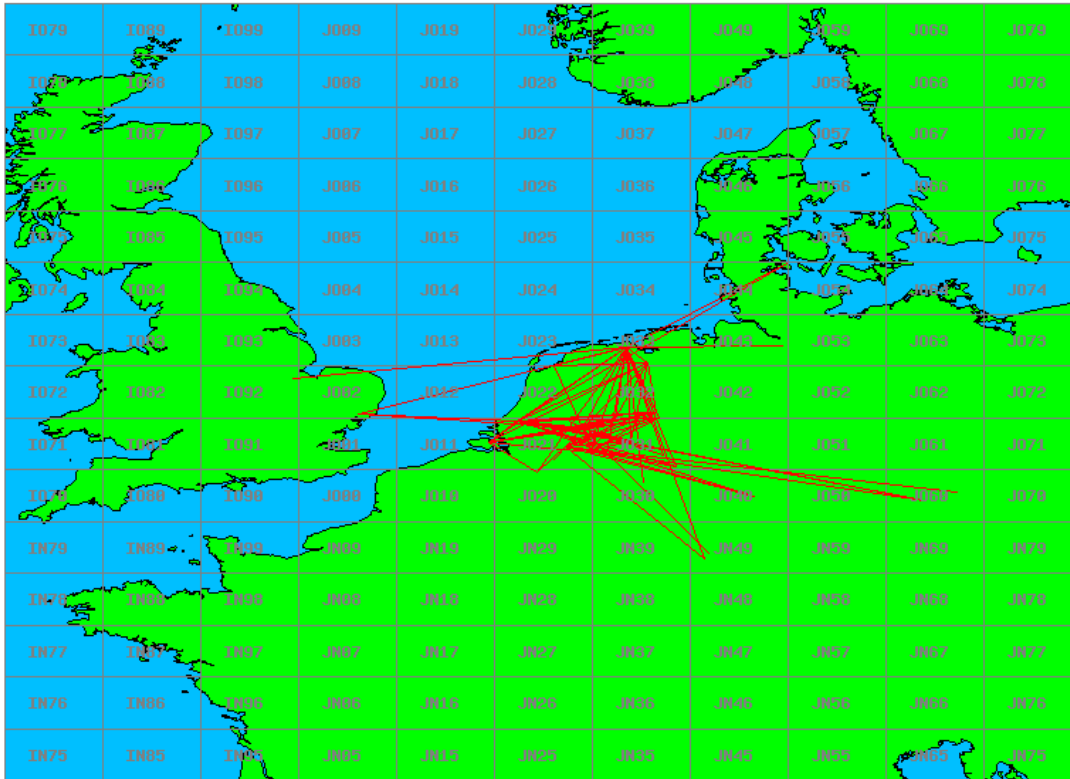


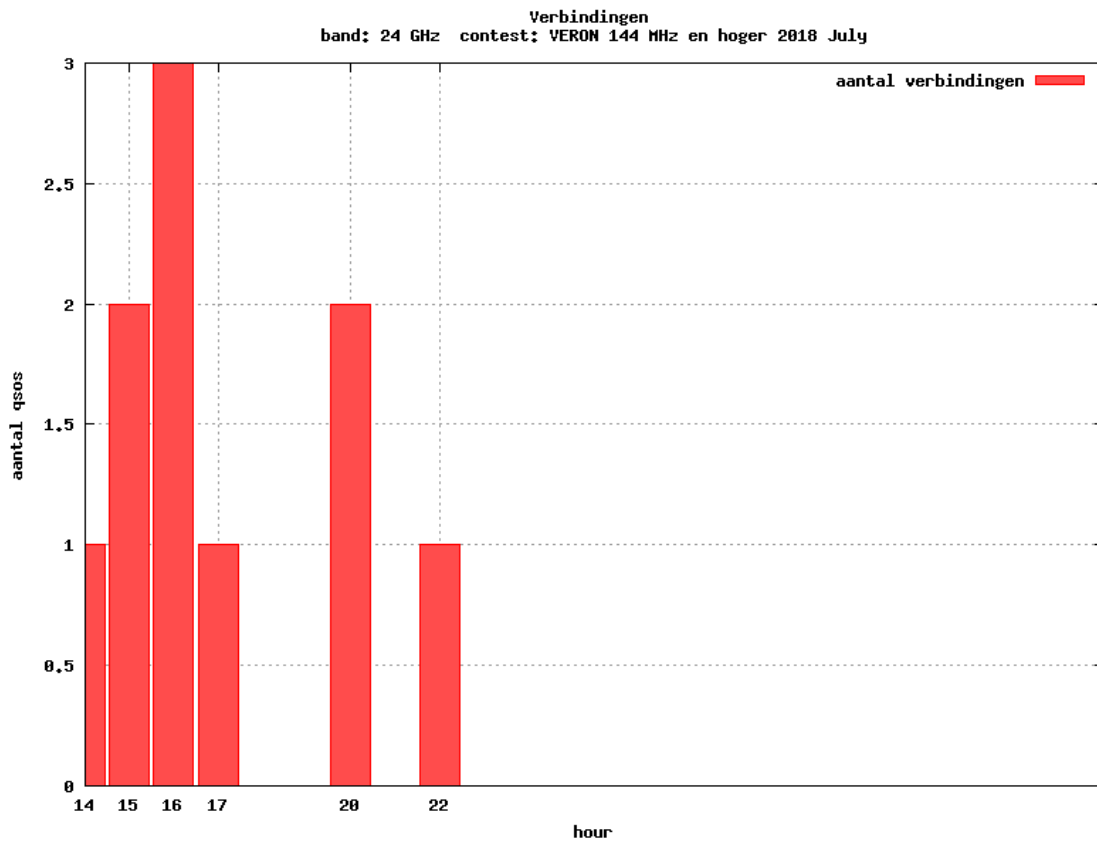
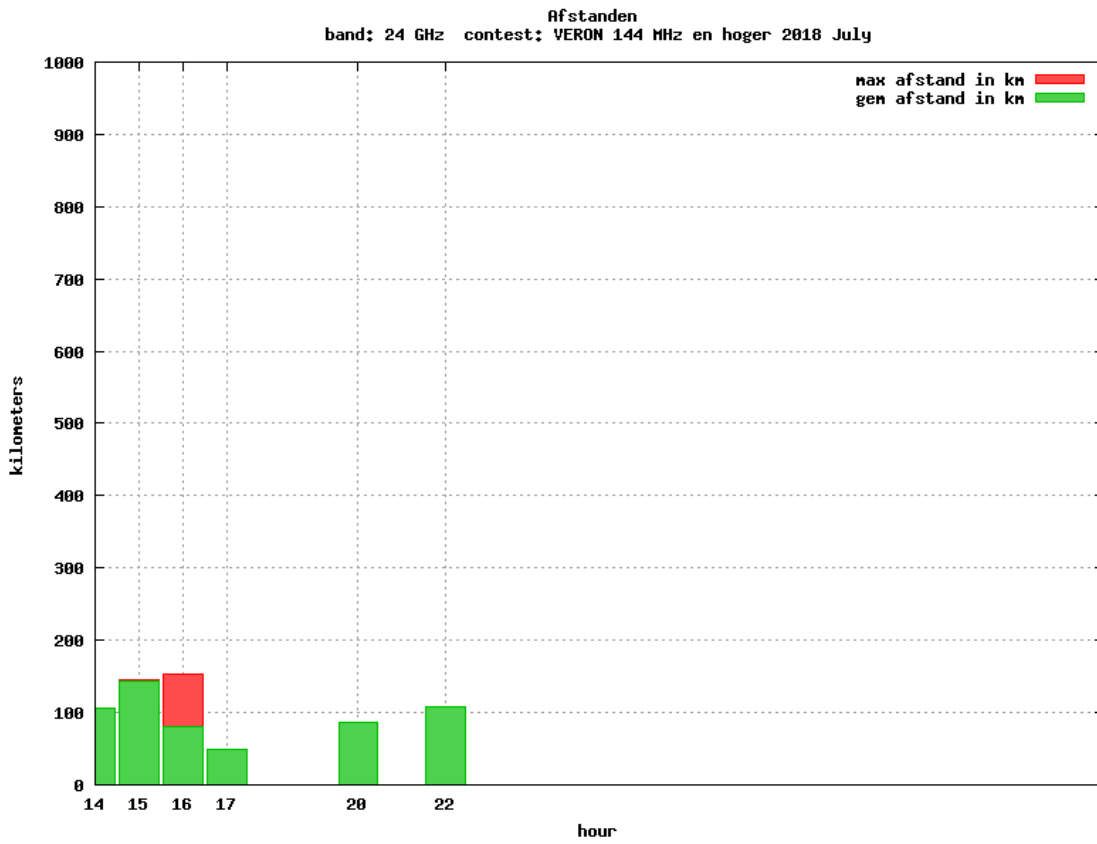
Datum: 2018-07-30



Datum: 2018-07-30

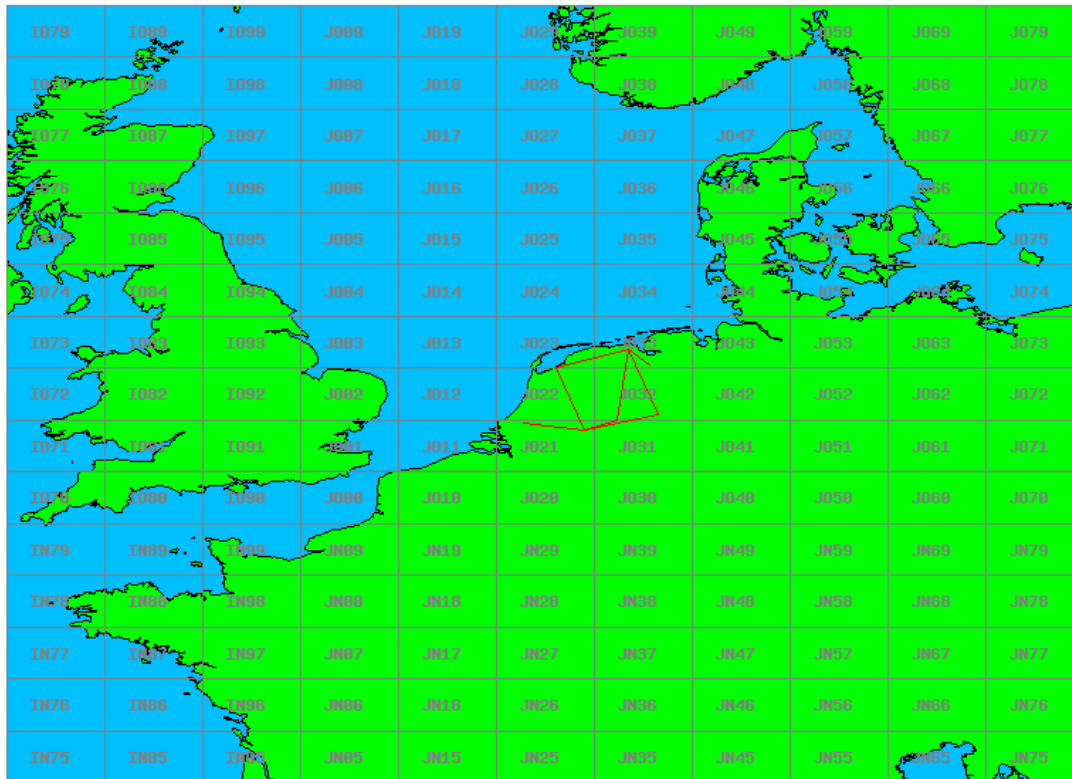
Band: 10 GHz. Alle Verbindingen van de deelnemers op 2018-07-07/08





Datum: 2018-07-30

Band: 24 GHz. Alle Verbindingen van de deelnemers op 2018-07-07/08





Vereniging voor  
Experimenteel  
Radio Onderzoek  
in Nederland

## **Uitslag Radiowedstrijd VERON 144 MHz en hoger 2018 July**

Datum: 2018-07-30